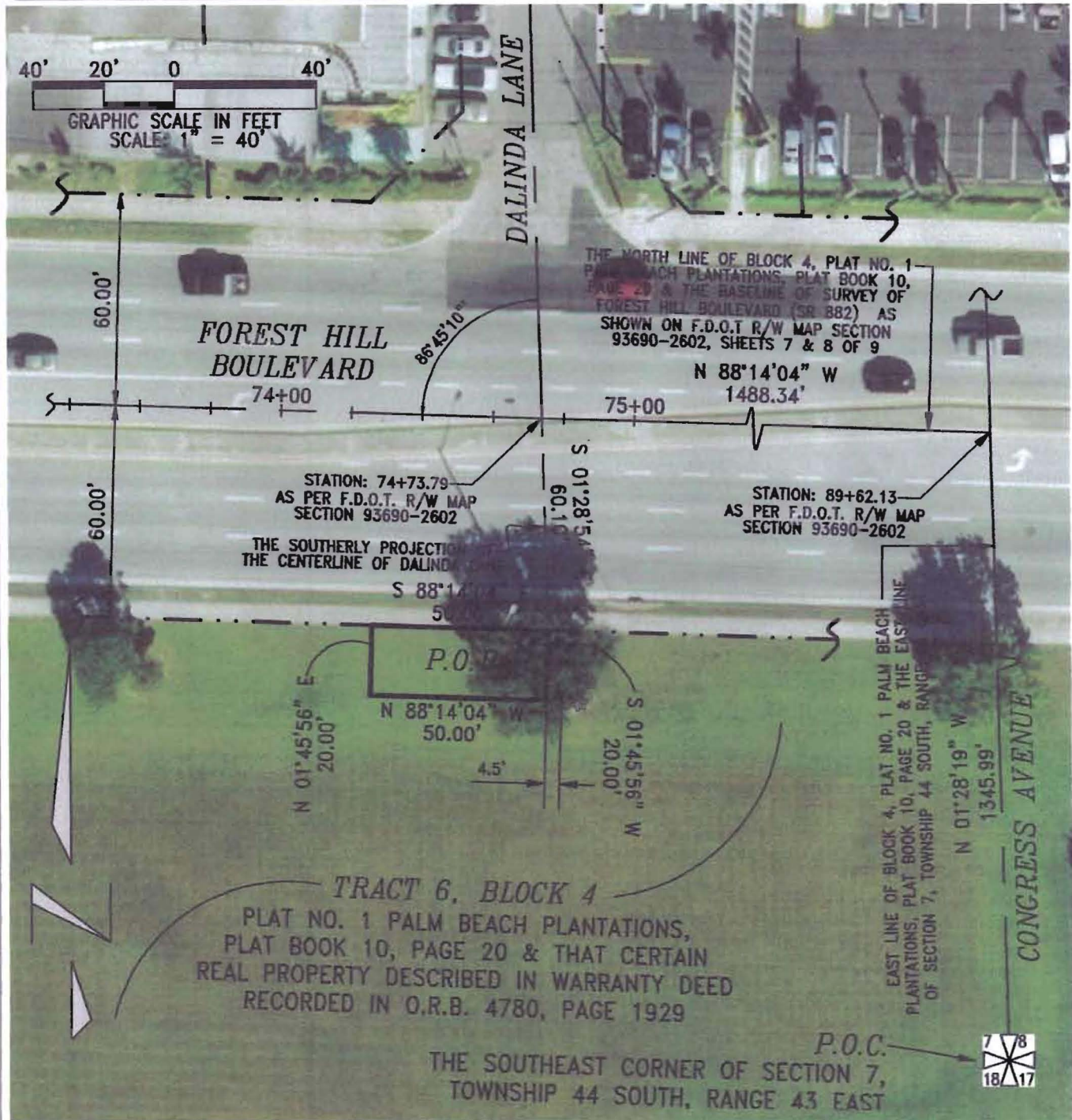


Exhibit "B"

DESCRIPTION & SKETCH
 PREPARED FOR:
 PALM BEACH COUNTY
 WATER UTILITIES DEPARTMENT

PALM BEACH COUNTY WATER
 UTILITIES DEPARTMENT EASEMENT



Plot Date: Sep. 01, 2011
 File: Z:\2011\11-976 PBCWUD Forest Hill-Dalinda Lane Easement.dwg

Keshavarz & Associates, Inc.
 CONSULTING ENGINEERS - SURVEYORS
 711 N. Dixie Highway, Suite 201
 West Palm Beach, Florida 33401
 Tel: (561) 689-6090 Fax: (561) 689-7476 LB-4897

PROJ.: 11-976

REVISIONS:

SCALE: 1" = 40'

OFFICE: S.F.B.

DWG. No: A11-976

CHK: S.F.B.

DATE: 08/31/11

SHEET 3 OF 3