

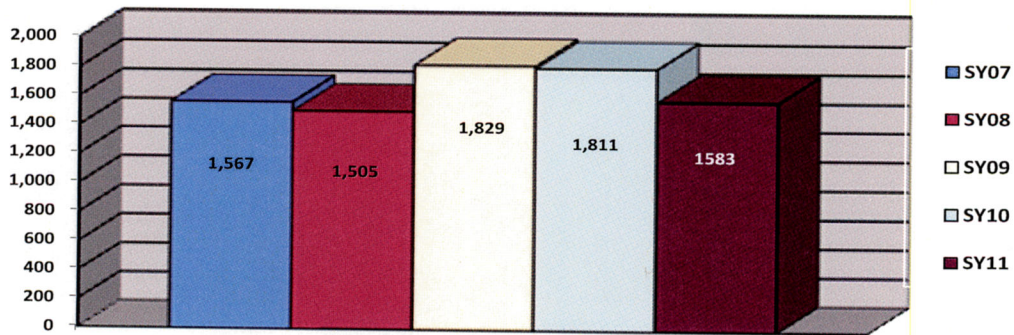
**State of Florida Department of Health Standard Contract for
Community-Based Tobacco Prevention Interventions
Data Panel**

FACE ITSM

	Total # of Families Served	Percentage of Families who Completed All Required Sessions	Percentage Re-suspended for Alcohol, Tobacco, and Other Drugs	Parent Attendance
SY'07	427	85%	5%	100%
SY'08	453	82%	5%	100%
SY'09	598	83%	4%	100%
SY'10	501	82%	3%	100%
SY'11	435	82%	5%	100%

Data Source: TERMS School District of Palm Beach County and FACE ITSM ACCESS Database

Days Saved from Out-of-School Suspension



Data Source: FACE ITSM Database