



The School District of Palm Beach County

Publishing by eAgenda



e-agenda.NET

School Board Meeting
Agenda Item #25

APPROVED

7/20/2011

Title

RE-3 Toussaint L'Overture Charter School Lease of Delray Full Service Center

Description

1. The Lease Agreement permits Toussaint L'Overture High School for Arts and Social Justice Charter School (Toussaint) utilization of Building 5, Building 12 (cafeteria), four (4) portables (ARC, H, I and L) and the designated parking areas depicted in Exhibit "A".
2. This facility is being made available to Toussaint Charter School on an emergency basis as they have lost their current lease and the Town of Lantana rejected their use of a facility they were planning on using for several months.
3. The term of the Lease shall be for one school year commencing on August 1, 2011 and ending on June 30, 2012.
4. Toussaint Charter School is aware the School District has other plans for the Delray Full Service campus and provided assurance they will not seek an extension of this lease. (See Attached Correspondence)
5. Toussaint Charter School is responsible for all costs associated with the move to Delray Full Service Center (DFSC).
6. Toussaint Charter School shall be responsible for all utility, phone and maintenance fees related to the operation of the Leased premises.
7. The utility expenses shall be pro-rated based on Toussaint's utilization of 28,984 square feet (32.4%) of the total occupied air conditioned space of 89,471 square feet at DFSC.
8. Pursuant to Florida Statute 1013, a "Spot" Survey or Amendment to the Educational Plant Survey will be prepared and submitted to the Department of Education for approval of the relocation of Toussaint to DFSC and the continuing use of DFSC as an Adult Education facility.

Recommendation

I recommend the School Board approve a Lease Agreement between Toussaint L'Overture High School for Arts and Social Justice Charter School, Inc. and the School Board of Palm Beach County for a portion of Delray Full Service Center located at 301 S.W. 14th Avenue, Delray Beach; and authorize the Chairman and the Superintendent to sign all necessary documents

My Contact

Joseph Sanches (sanchesj@palmbeachschools.org)

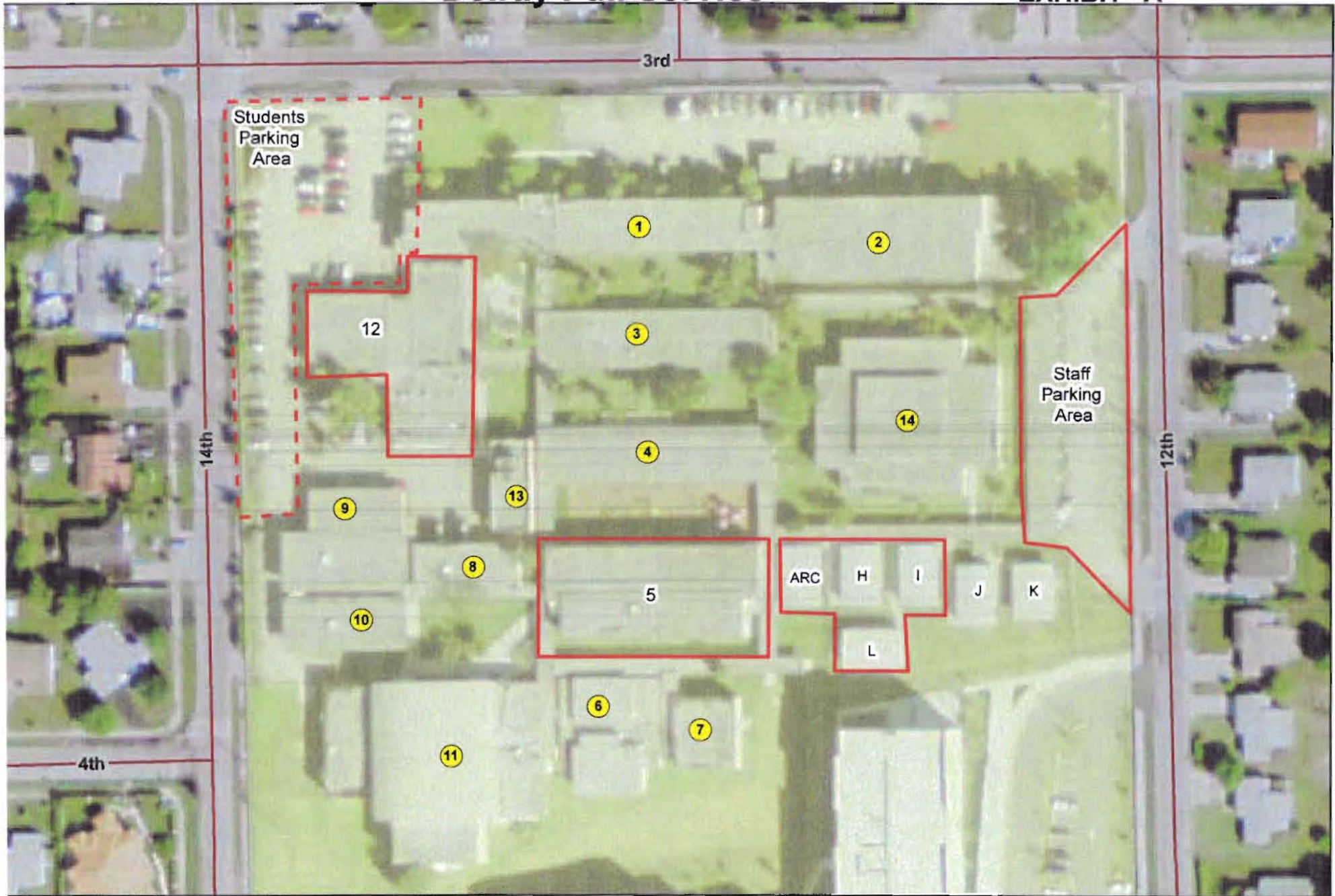
Financial Impact



N/A

- Attachment: [Exhibit A.pdf](#)
 Attachment: [DFSC-Toussaint Lease.pdf](#)
 Attachment: [checklist.pdf](#)
 Attachment: [Toussaint correspondence.pdf](#)

Delray Full Service

EXHIBIT "A"



-  Exclusive Lease Premises
-  Non-Exclusive Lease Premises

 School Board Property



6/2011 - S. Gilles
Delray_Full_Service_Lessee.mxd

Palm Beach County School District
Real Estate Department



368 Interstate Park Road N
Suite 200
Palm Beach, Florida 33404